

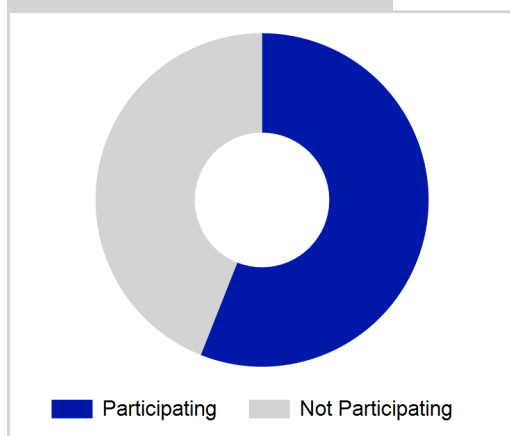
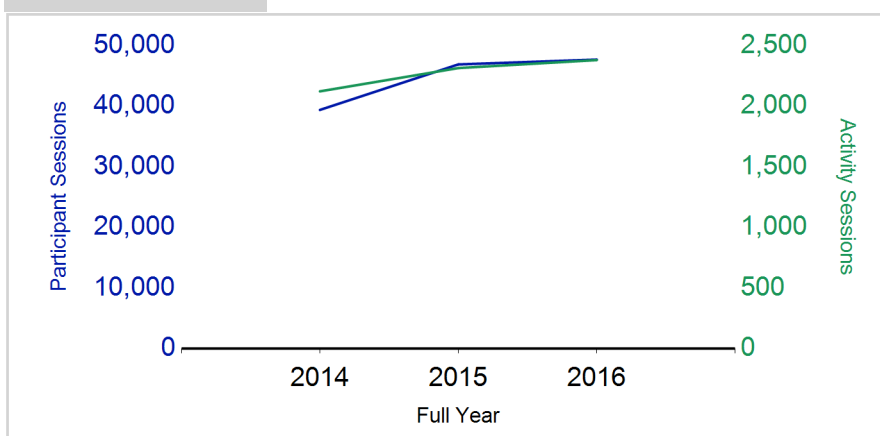
Term Report: Shetland Islands Council

Academic Year : 2016/2017, Term(s) : Full Year

Putting sport first

sportscotland
the national agency for sport

% School Roll Participating

Participant Sessions¹

	2014 Full Year	2015 Full Year	2016 Full Year
Activity Sessions	2,122	2,314	2,380
% Purely voluntary	76%	76%	91%
Activity Session Blocks ³	274	296	296
Avg. Activity Sessions / Block ⁴	7.7	7.8	8.0
Different Activities	31	24	26
Participant Sessions¹	39,376	46,886	47,685
% Female	52%	50%	52%
Distinct Participants²	1,789	1,880	1,785
Total School Roll	3,226	3,237	3,238
% Participating	55%	58%	55%
Distinct Deliverers⁵	210	192	266
% Volunteers	91%	91%	98%
Qualified Volunteers	58	80	92
Secondary Pupils	49	32	35
Total Deliverer Sessions ⁶	4,881	5,516	6,750
Avg. Deliverers Sessions / Deliverers	23.2	28.7	25.4
School Club Links	280	231	310
Schools with at least one link	35	35	35
Clubs with at least one link	40	35	38

1. Participant Sessions are the 'visits' pupils have made to activities. These figures do not represent the distinct pupils, and should only be taken as indicative of participation.

2. Distinct participants are pupils who have attended at least one session of Active Schools supported activity across the selected year/term (whether this was in a single or multiple school activity).

3. Activities are recorded in ASMO as 'Activity Session Blocks' which describe a group who meet to take part in an activity.

4. The Average Activity Sessions/Block figure shows the average length of a block (i.e. how many weeks did the average block run for?)

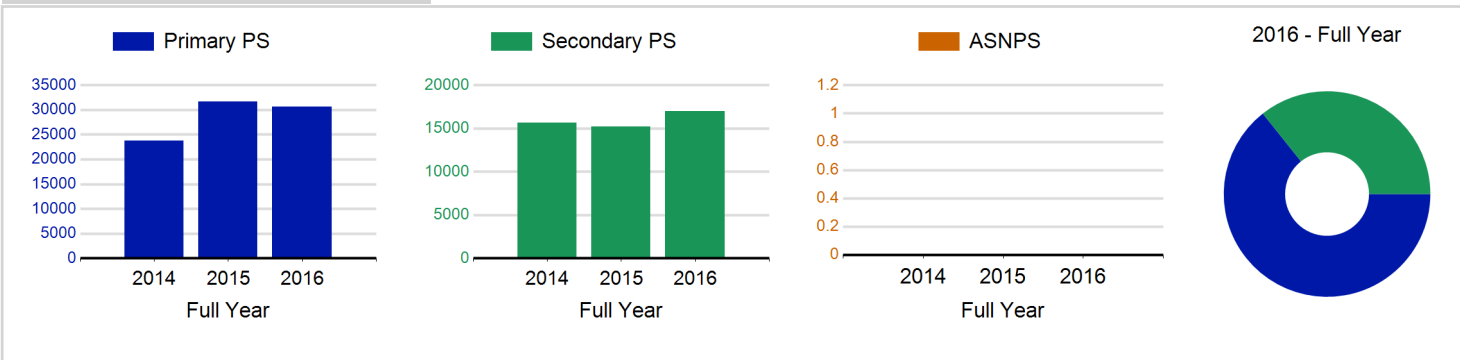
5. Distinct Deliverers are deliverers who have delivered at least one session of Active Schools supported activity across the selected year/term.

6. Deliverer Sessions are the 'visits' deliverers have made to activities. These figures do not represent the distinct deliverers, and should only be taken as indicative of delivery. Distinct deliverer information is only available at the local authority level.

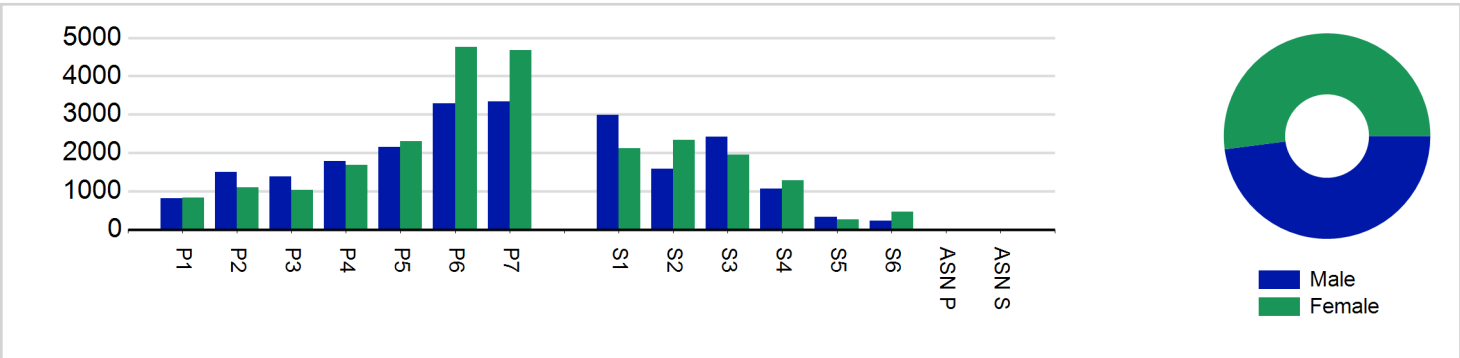
7. School Roll details are taken from the Pupil Census as at September of the Academic Year. Summaries available at <http://www.gov.scot/topics/statistics/browse/school-education/datasets>

8. Distinct Participant data collection 2011 onwards

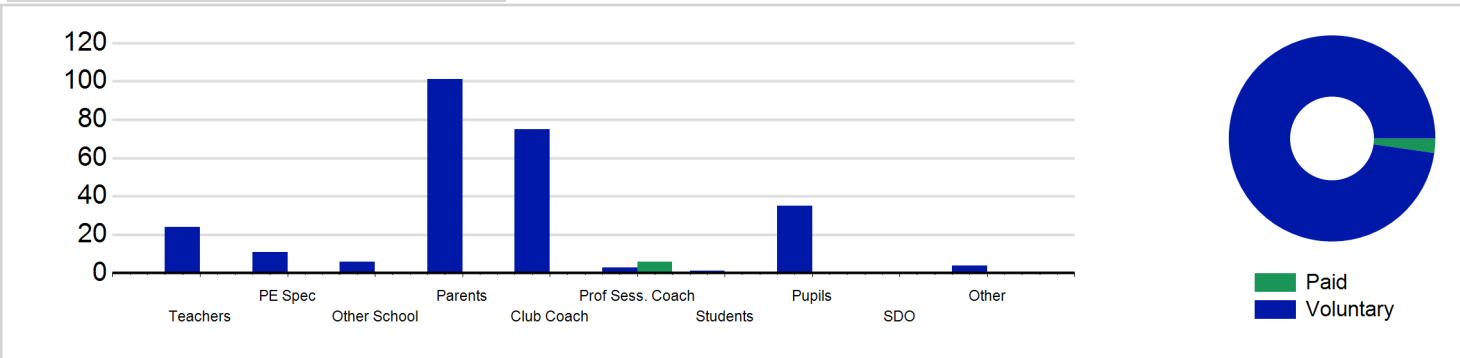
Participant Sessions¹ by School Type



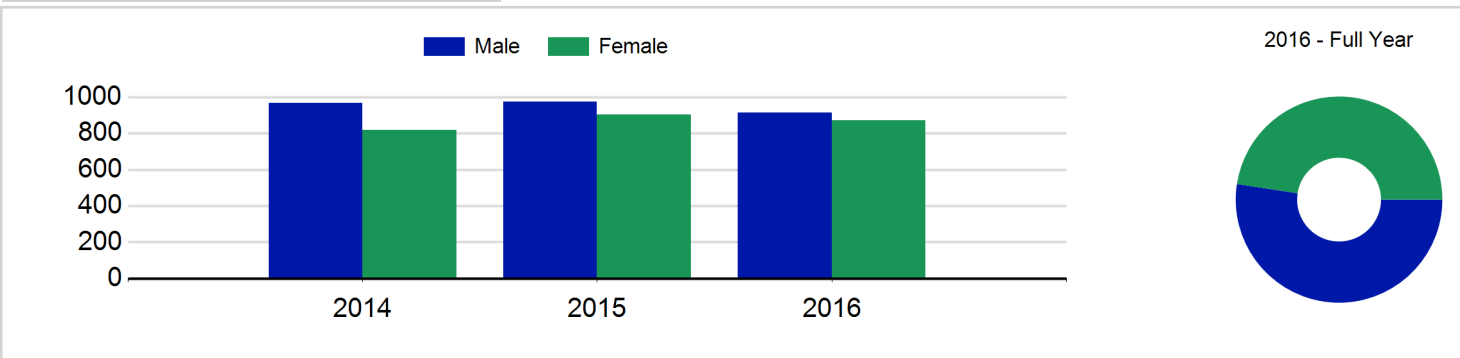
Participant Sessions¹ by Year Group and Gender



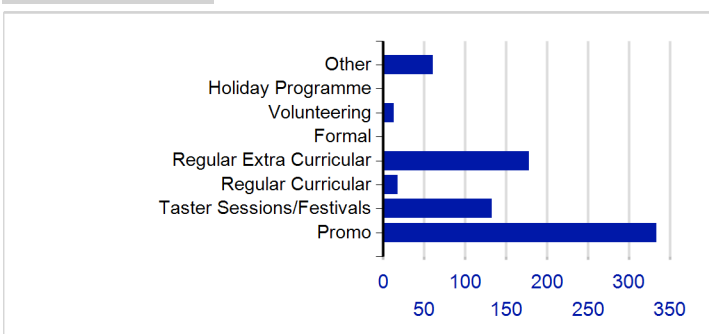
Distinct Deliverers



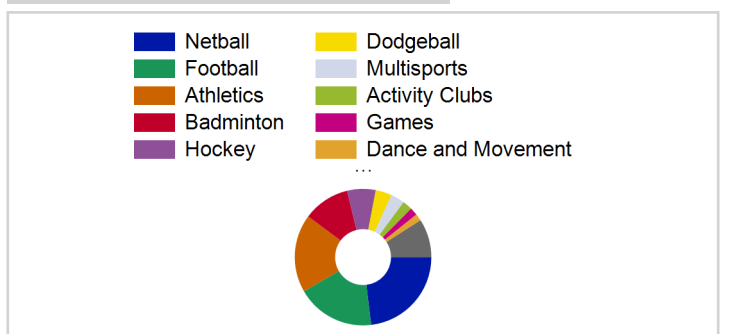
Distinct Participants² by Gender



School/Club Links



Top 10 Activities. by Participant Sessions¹



Term Report: Shetland Islands Council

Academic Year : 2016/2017, Term(s) : Full Year

Putting sport first

sportscotland
the national agency for sport

Participant Sessions¹ by Year Group and Gender

	Male	Female
P1	821	837
P2	1,493	1,101
P3	1,385	1,036
P4	1,788	1,684
P5	2,153	2,309
P6	3,287	4,761
P7	3,334	4,681
S1	2,987	2,117
S2	1,585	2,342
S3	2,419	1,951
S4	1,063	1,281
S5	323	270
S6	222	455
ASN P		
ASN S		
Total	22,860	24,825

Distinct Deliverers⁵ by Type

	Paid	Voluntary
Teachers		24
PE Spec		11
Other School		6
Parents		101
Club Coach		75
Prof Sess. Coach	6	3
Students		1
Pupils		35
SDO		
Other		4
Total	6	260

Distinct Participants² by Gender

Male	914
Female	871
Total	1,785