

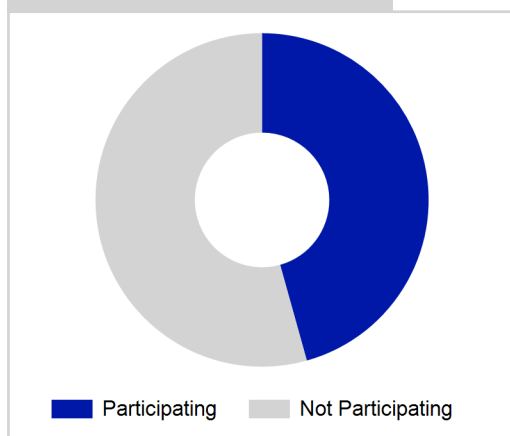
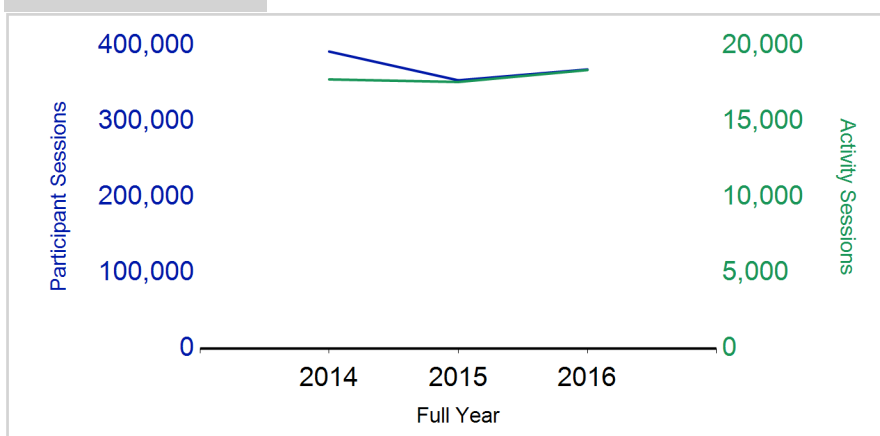
Term Report: South Lanarkshire Council

Academic Year : 2016/2017, Term(s) : Full Year

Putting sport first

sportscotland
the national agency for sport

% School Roll Participating

Participant Sessions¹

	2014 Full Year	2015 Full Year	2016 Full Year
Activity Sessions	17,765	17,596	18,382
% Purely voluntary	84%	83%	86%
Activity Session Blocks ³	2151	2218	2381
Avg. Activity Sessions / Block ⁴	8.3	7.9	7.7
Different Activities	61	60	60
Participant Sessions¹	392,070	354,058	368,390
% Female	48%	47%	48%
Distinct Participants²	19,487	20,038	20,130
Total School Roll	43,229	43,547	43,547
% Participating	45%	46%	46%
Distinct Deliverers⁵	873	862	1,056
% Volunteers	93%	92%	89%
Qualified Volunteers	459	476	405
Secondary Pupils	186	152	204
Total Deliverer Sessions ⁶	31,017	26,676	30,723
Avg. Deliverers Sessions / Deliverers	35.5	30.9	29.1
School Club Links	1,044	1,194	980
Schools with at least one link	144	145	143
Clubs with at least one link	108	97	83

1. Participant Sessions are the 'visits' pupils have made to activities. These figures do not represent the distinct pupils, and should only be taken as indicative of participation.

2. Distinct participants are pupils who have attended at least one session of Active Schools supported activity across the selected year/term (whether this was in a single or multiple school activity).

3. Activities are recorded in ASMO as 'Activity Session Blocks' which describe a group who meet to take part in an activity.

4. The Average Activity Sessions/Block figure shows the average length of a block (i.e. how many weeks did the average block run for?)

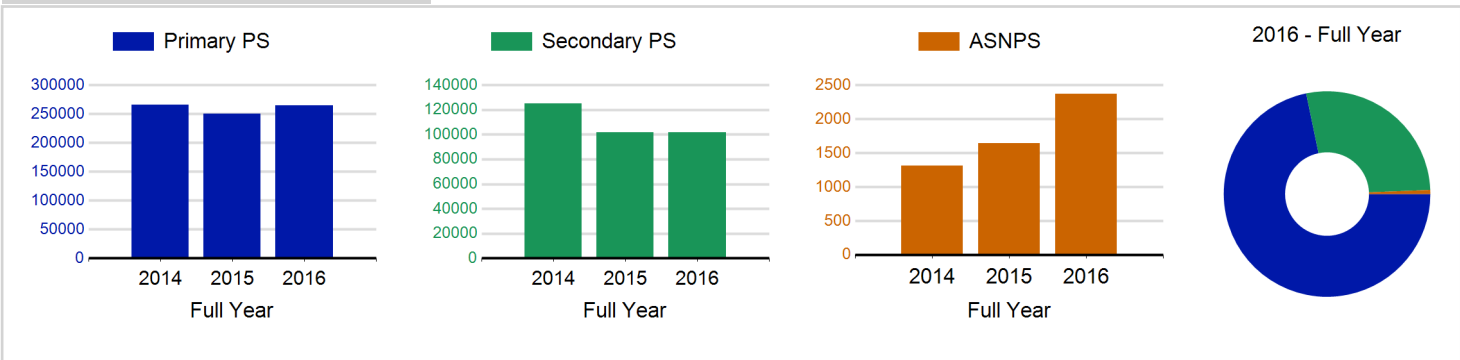
5. Distinct Deliverers are deliverers who have delivered at least one session of Active Schools supported activity across the selected year/term.

6. Deliverer Sessions are the 'visits' deliverers have made to activities. These figures do not represent the distinct deliverers, and should only be taken as indicative of delivery. Distinct deliverer information is only available at the local authority level.

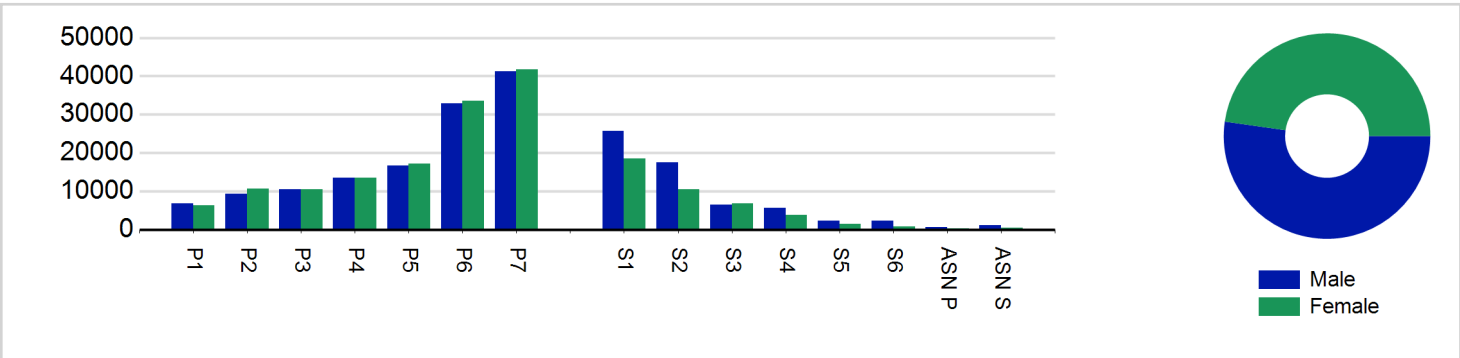
7. School Roll details are taken from the Pupil Census as at September of the Academic Year. Summaries available at <http://www.gov.scot/topics/statistics/browse/school-education/datasets>

8. Distinct Participant data collection 2011 onwards

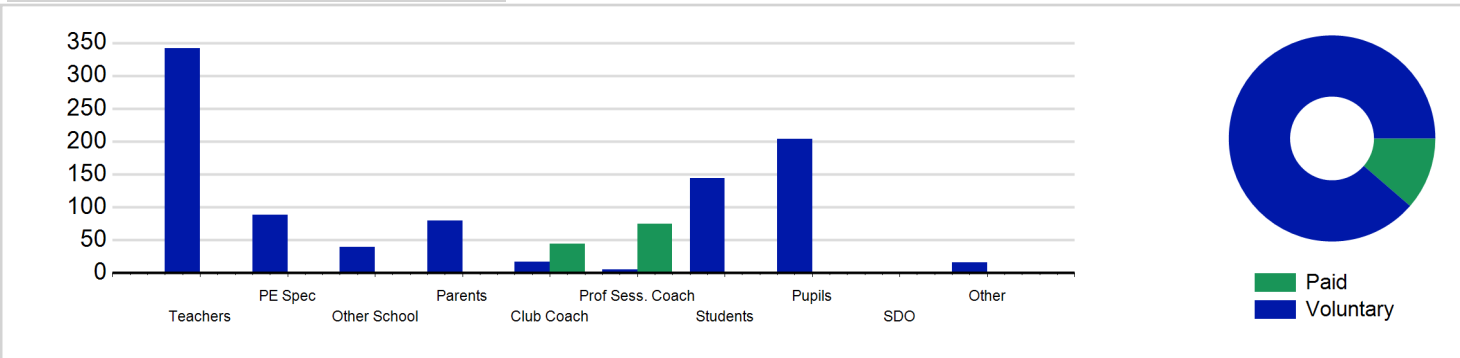
Participant Sessions¹ by School Type



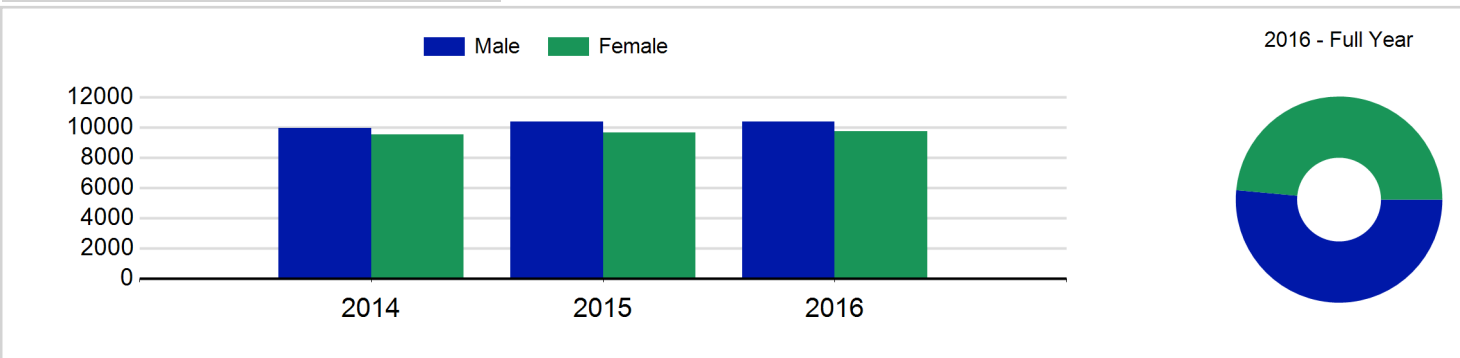
Participant Sessions¹ by Year Group and Gender



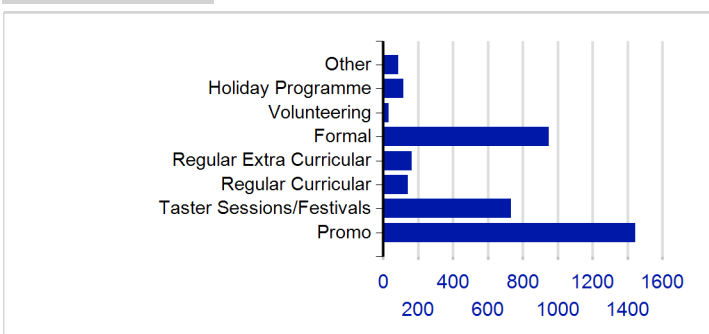
Distinct Deliverers



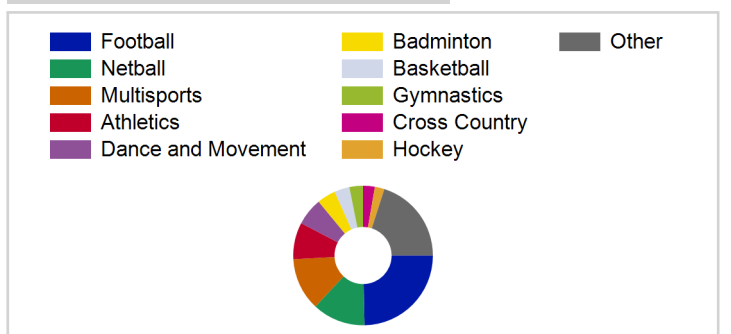
Distinct Participants² by Gender



School/Club Links



Top 10 Activities. by Participant Sessions¹



Term Report: South Lanarkshire Council

Academic Year : 2016/2017, Term(s) : Full Year

Putting sport first

sportscotland
the national agency for sport

Participant Sessions¹ by Year Group and Gender

	Male	Female
P1	6,755	6,369
P2	9,373	10,592
P3	10,425	10,501
P4	13,435	13,419
P5	16,704	17,231
P6	32,853	33,594
P7	41,292	41,783
S1	25,619	18,530
S2	17,559	10,413
S3	6,484	6,720
S4	5,697	3,813
S5	2,343	1,427
S6	2,291	798
ASN P	534	294
ASN S	1,107	435
Total	192,471	175,919

Distinct Deliverers⁵ by Type

	Paid	Voluntary
Teachers		342
PE Spec		88
Other School		40
Parents		80
Club Coach	44	17
Prof Sess. Coach	75	5
Students		144
Pupils		204
SDO	1	
Other		16
Total	120	936

Distinct Participants² by Gender

Male	10,382
Female	9,748
Total	20,130