

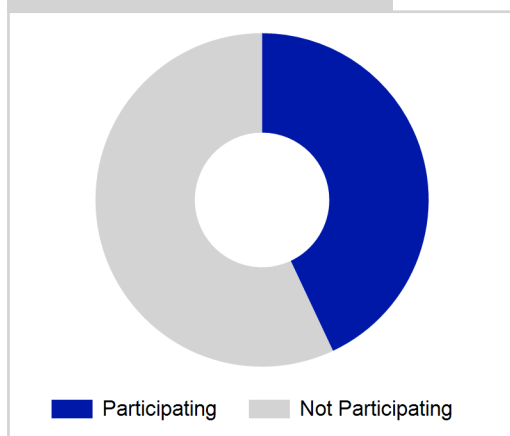
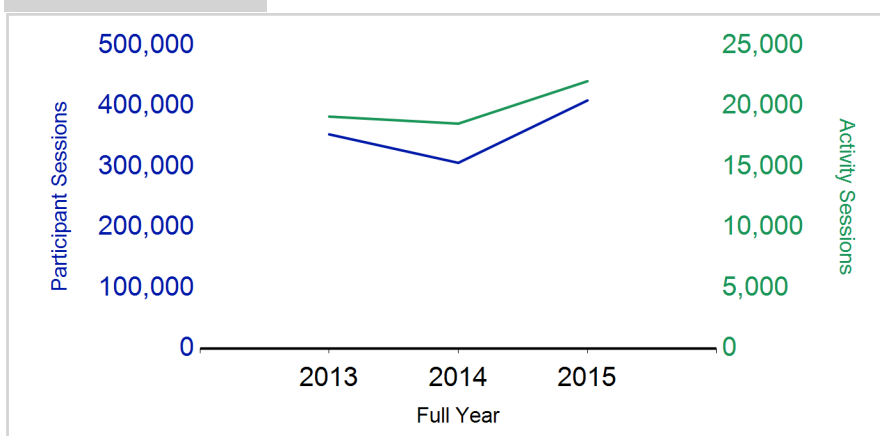
# Term Report: North Lanarkshire Council

Academic Year : 2015/2016, Term(s) : Full Year

Putting sport first

**sportscotland**  
 the national agency for sport

% School Roll Participating

Participant Sessions<sup>1</sup>

	2013 Full Year	2014 Full Year	2015 Full Year
<b>Activity Sessions</b>	<b>19,137</b>	<b>18,557</b>	<b>22,058</b>
% Purely voluntary	84%	81%	85%
Activity Session Blocks <sup>3</sup>	2253	2458	2776
Avg. Activity Sessions / Block <sup>4</sup>	8.5	7.5	7.9
Different Activities	64	61	67
<b>Participant Sessions<sup>1</sup></b>	<b>353,482</b>	<b>306,493</b>	<b>409,460</b>
% Female	46%	46%	48%
<b>Distinct Participants<sup>2</sup></b>	<b>20,882</b>	<b>19,750</b>	<b>22,660</b>
Total School Roll	49,053	49,276	49,355
% Participating	43%	40%	46%
<b>Distinct Deliverers<sup>5</sup></b>	<b>840</b>	<b>1,008</b>	<b>1,367</b>
% Volunteers	95%	87%	92%
Qualified Volunteers	423	578	546
Secondary Pupils	100	257	262
Total Deliverer Sessions <sup>6</sup>	28,763	27,229	30,968
Avg. Deliverers Sessions / Deliverers	34.2	27.0	22.7
<b>School Club Links</b>	<b>1,562</b>	<b>1,871</b>	<b>2,502</b>
Schools with at least one link	158	155	153
Clubs with at least one link	132	125	135

1. Participant Sessions are the 'visits' pupils have made to activities. These figures do not represent the distinct pupils, and should only be taken as indicative of participation

2. Distinct participants are pupils who have attended at least one session of Active Schools supported activity across the selected year/term (whether this was in a single or multiple school activity).

3. Activities are recorded in ASMO as 'Activity Session Blocks' which describe a group who meet to take part in an activity.

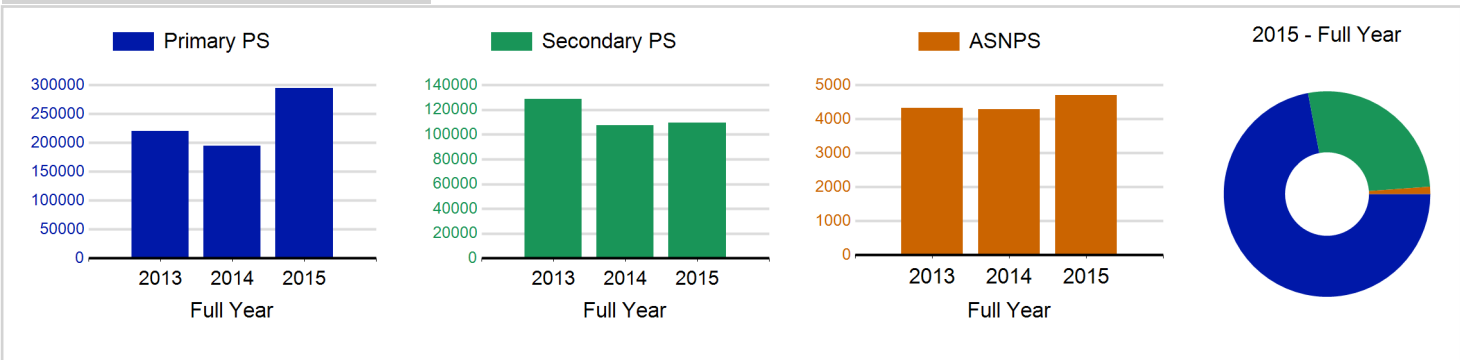
4. The Average Activity Sessions/Block figure shows the average length of a block (i.e. how many weeks did the average block run for?)

5. Distinct Deliverers are deliverers who have delivered at least one session of Active Schools supported activity across the selected year/term.

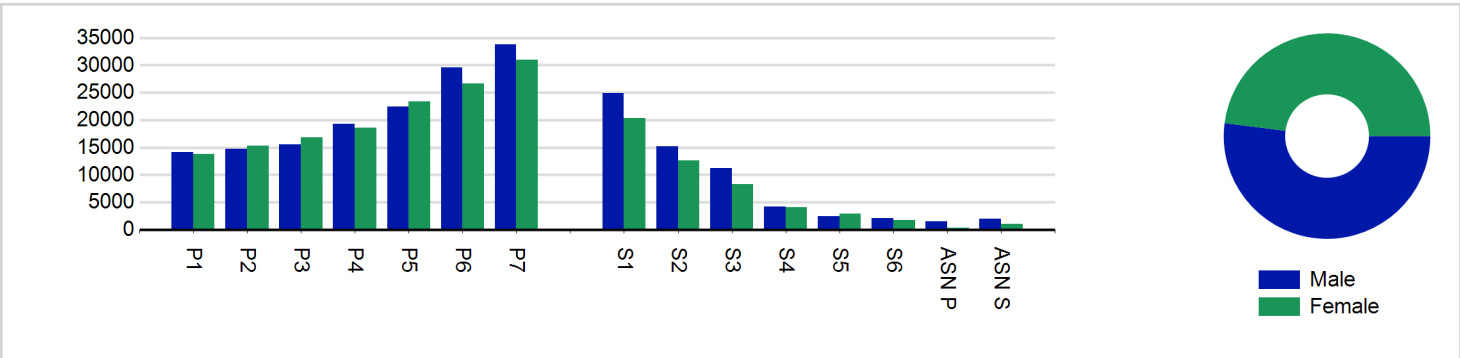
6. Deliverer Sessions are the 'visits' deliverers have made to activities. These figures do not represent the distinct deliverers, and should only be taken as indicative of delivery. Distinct deliverer information is only available at the local authority level.

7. School Roll details are taken from the Pupil Census as at September of the Academic Year. Summaries available at <http://www.gov.scot/topics/statistics/browse/school-education/datasets>

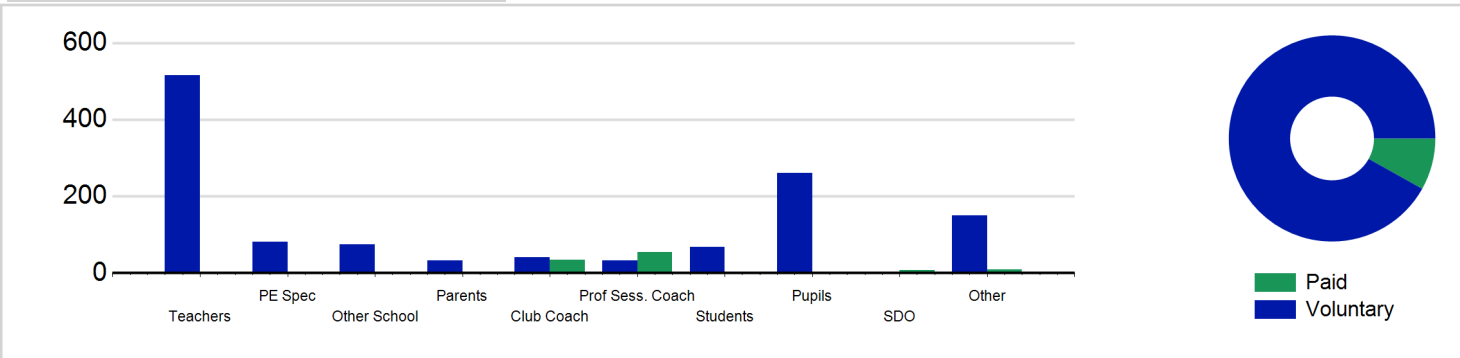
### Participant Sessions<sup>1</sup> by School Type



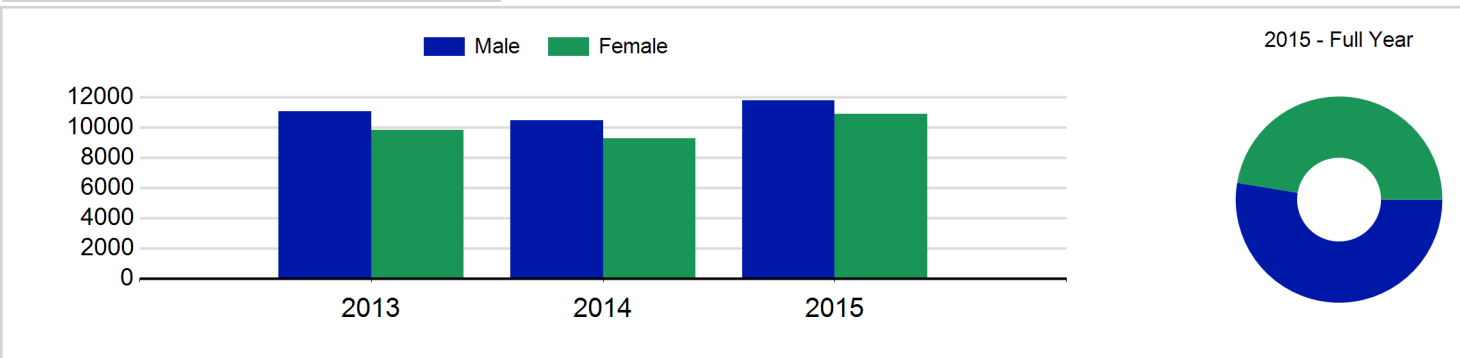
### Participant Sessions<sup>1</sup> by Year Group and Gender



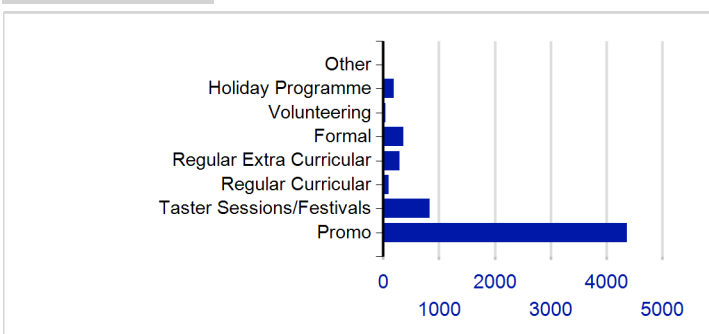
### Distinct Deliverers



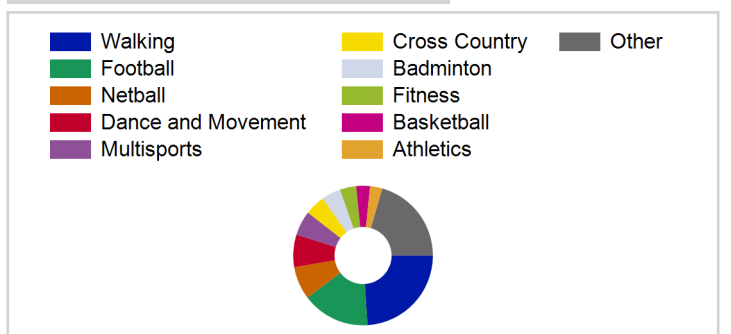
### Distinct Participants<sup>2</sup> by Gender



### School/Club Links



### Top 10 Activities. by Participant Sessions<sup>1</sup>



# Term Report: North Lanarkshire Council

Academic Year : 2015/2016, Term(s) : Full Year

Putting sport first

**sportscotland**  
the national agency for sport

## Participant Sessions<sup>1</sup> by Year Group and Gender

	Male	Female
<b>P1</b>	14,091	13,793
<b>P2</b>	14,712	15,250
<b>P3</b>	15,512	16,818
<b>P4</b>	19,303	18,536
<b>P5</b>	22,482	23,392
<b>P6</b>	29,619	26,649
<b>P7</b>	33,832	31,013
<b>S1</b>	24,936	20,295
<b>S2</b>	15,193	12,553
<b>S3</b>	11,185	8,226
<b>S4</b>	4,231	4,055
<b>S5</b>	2,390	2,875
<b>S6</b>	2,084	1,728
<b>ASN P</b>	1,429	321
<b>ASN S</b>	1,987	970
<b>Total</b>	<b>212,986</b>	<b>196,474</b>

## Distinct Deliverers<sup>5</sup> by Type

	Paid	Voluntary
<b>Teachers</b>	1	515
<b>PE Spec</b>		81
<b>Other School</b>	3	74
<b>Parents</b>		33
<b>Club Coach</b>	34	41
<b>Prof Sess. Coach</b>	54	33
<b>Students</b>	2	68
<b>Pupils</b>	1	261
<b>SDO</b>	7	
<b>Other</b>	9	150
<b>Total</b>	<b>111</b>	<b>1,256</b>

## Distinct Participants<sup>2</sup> by Gender

<b>Male</b>	11,787
<b>Female</b>	10,873
<b>Total</b>	<b>22,660</b>