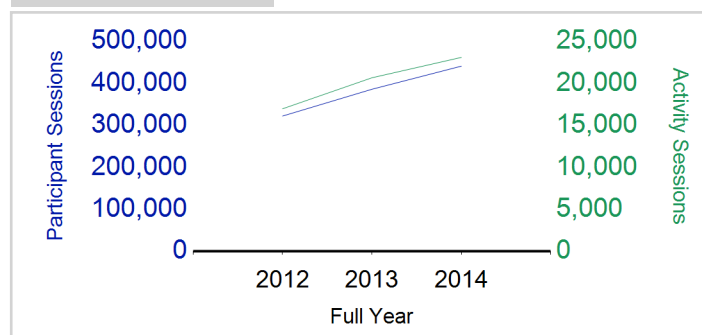


Term Report: Fife Council

Academic Year : 2014/2015, Term(s) : Full Year

Putting Sport First

sportscotland
 the national agency for sport
Participant Sessions¹

	2012 Full Year	2013 Full Year	2014 Full Year
Activity Sessions	16,986	20,679	23,108
% Purely voluntary	71%	67%	65%
Activity Session Blocks ²	1,763	2,101	2,331
Avg Activity Sessions / Blocks ³	9.6	9.8	9.9
Different Activities	58	58	61
Participant Sessions¹	322,392	386,246	441,278
% Female	43%	42%	42%
Distinct Deliverers⁴	768	783	1,025
% Volunteers	87%	91%	88%
Qualified Volunteers	382	494	492
Secondary Pupils	116	109	172
Total Deliverer Sessions ⁵	25,179	31,684	34,541
Avg Deliverers Sessions / Deliverer	32.8	40.5	33.7
School Club Links	835	1,262	1,227
Schools with at least 1 link	160	158	159
Clubs with at least 1 link	150	152	154

1. Participant Sessions are the 'visits' pupils have made to activities. These figures do not represent the distinct pupils, and should only be taken as indicative of participation

2. Activities are recorded in ASMO as 'Activity Session Blocks' which describe a group who meet to take part in an activity.

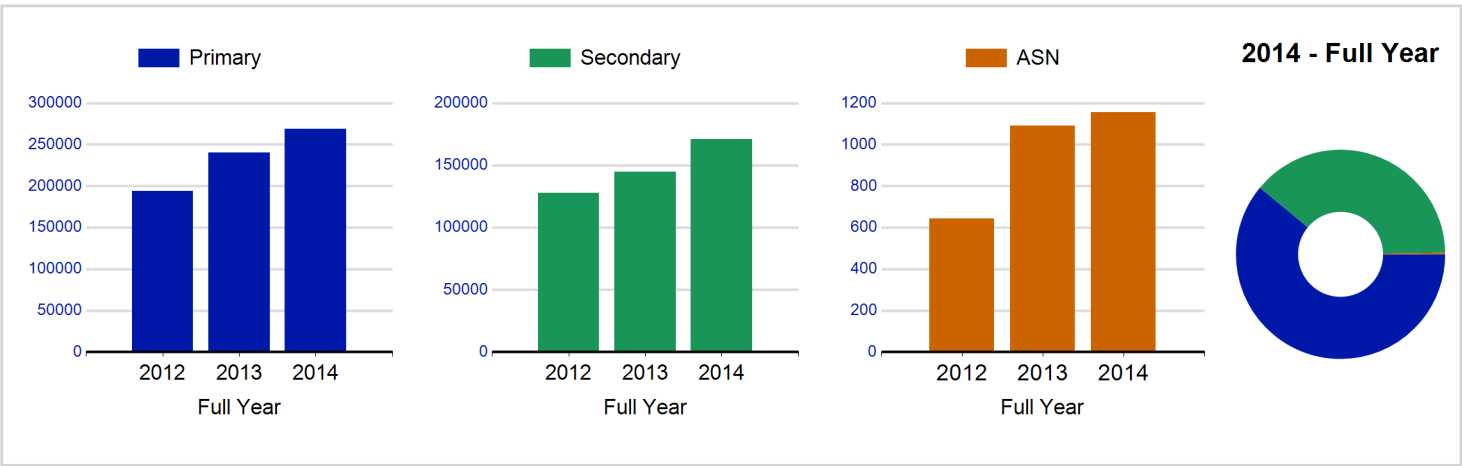
3. The Average Activity Sessions/Block figure shows the average length of a block (i.e. how many weeks did the average block run for?)

4. Distinct Deliverers are deliverers who have delivered at least one session of Active Schools supported activity across the selected year/term.

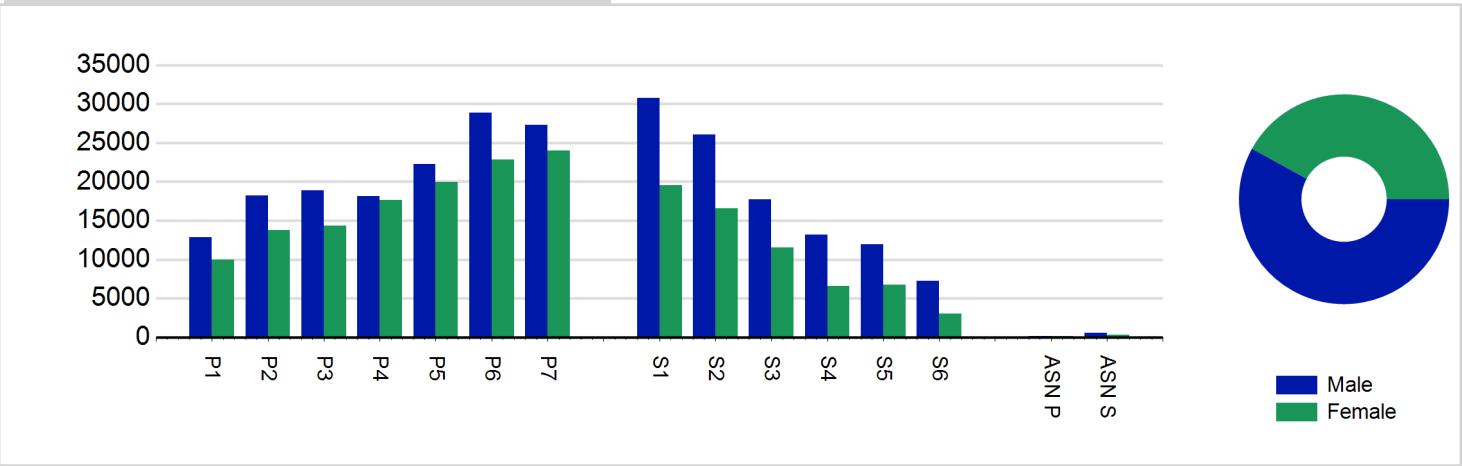
5. Deliverer Sessions are the 'visits' deliverers have made to activities. These figures do not represent the distinct deliverers, and should only be taken as indicative of delivery. Distinct deliverer information is only available at the local authority level.

6. Figures with N/A are not available for the 2008-11 phase of Active Schools. Charts which refer to information pre 2011 will show a huge increase from 0 – this is because we cannot include any 2008-2011 data at this level.

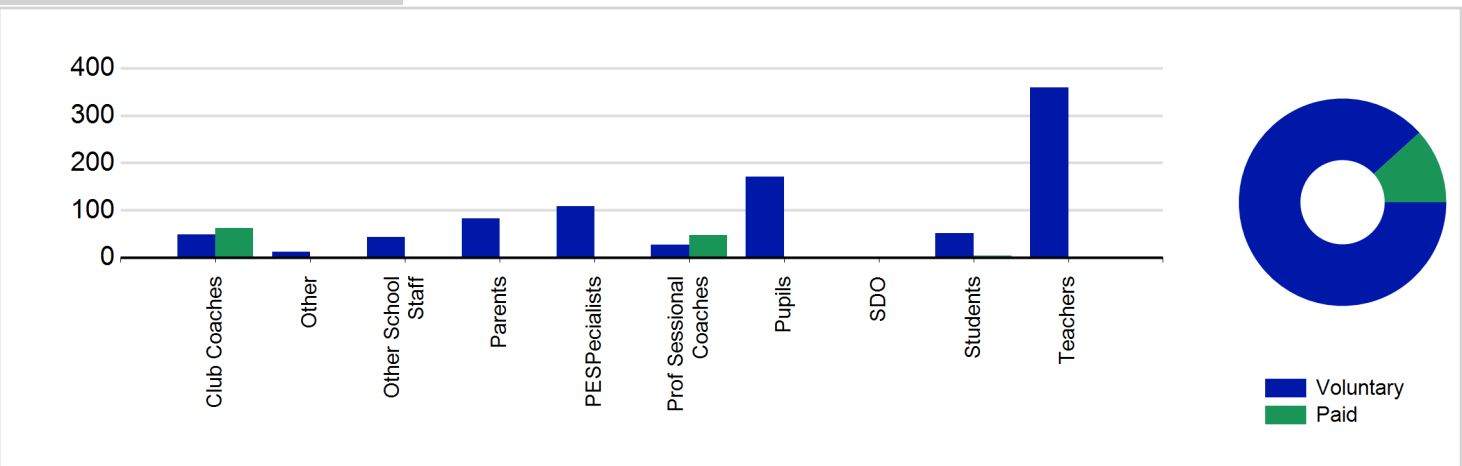
Participant Sessions¹ by School Type



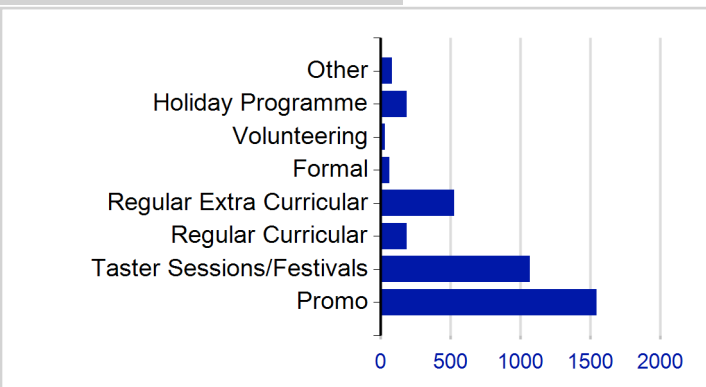
Participant Sessions¹ by Year Group and Gender



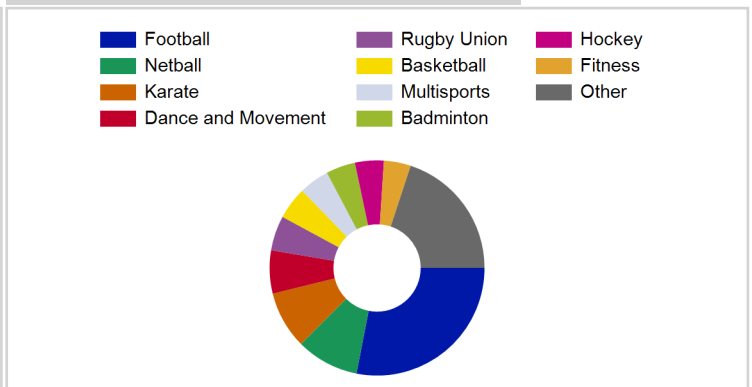
Distinct Deliverers⁴



School/Club Links



Top 10 Activities by Participant Sessions¹



Term Report: Fife Council

Academic Year : 2014/2015, Term(s) : Full Year

Putting Sport First

sportscotland
the national agency for sport

Participant Sessions 7 by Yeargroup and Gender

	Male	Female
P1	12,894	9,983
P2	18,241	13,776
P3	18,862	14,357
P4	18,119	17,657
P5	22,288	19,952
P6	28,874	22,836
P7	27,298	24,011
S1	30,780	19,548
S2	26,061	16,592
S3	17,688	11,566
S4	13,196	6,574
S5	11,927	6,781
S6	7,200	3,061
ASN P	104	179
ASN S	563	310
Total	254,095	187,183

Distinct Deliverers 4 by Type

	Paid	Voluntary
Parents	2	83
Teachers	1	359
PESpecialists	0	109
Other School Staff	1	43
Club Coaches	62	49
Prof Sessional Coaches	48	27
Students	4	52
Pupils	1	171
SDO	0	0
Other	1	12
Total	120	905